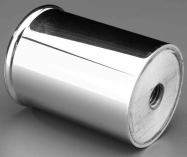


Changing the Candle Socket Fixture on Your Candlestick



To change your candlestick's candle socket, or to replace it with Almy's Threaded Stud Adapter so that it will accept almy Liquid Candles, follow these instructions.

First, remove the existing socket to determine the method by which it was originally affixed to the candlestick. Most sockets are secured to candlesticks in one of two ways:

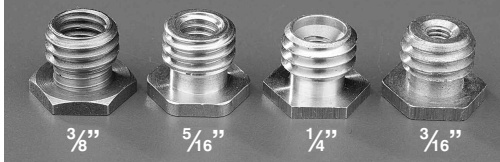
- **METHOD A** — a threaded bottom section of the socket is screwed onto a bolt that protrudes from the top of the candlestick.
- **METHOD B** — a screw is run from inside the bottom of the socket down into the top of the candlestick.

Depending on which method was used to affix the original socket, follow the direction that follow:

To Replace Sockets Affixed by Method A

(If a threaded bolt remains when you remove your existing socket.)

Threaded Stud Adapters



Determine the diameter and the threads/inch of the bolt to which the socket was attached. Your local hardware store can help.

If the bolt is $\frac{1}{2}$ " diameter, 13 threads/inch, your candlestick is already prepared to accept an Almy Liquid Candle or an Almy Candle Socket.

If the bolt has a diameter of $\frac{3}{16}$ ", $\frac{1}{4}$ ", $\frac{5}{16}$ " or $\frac{3}{8}$ ", order one of Almy's four stock Threaded Stud Adapters, to fit your bolt — they are free when you order an Almy Liquid Candle or an Almy Candle Socket. These adapters convert your bolt to the $\frac{1}{2}$ " diameter, 13 threads/inch size needed to fit Almy Sockets or Almy Liquid Candles.

Screw the Threaded Stud Adapter onto the bolt that held your old candle socket. Use a $\frac{3}{8}$ " wrench to tighten adapter onto the bolt.

Install your Almy Liquid Candle or Almy Socket. Simply screw your candle or candle socket onto the Threaded Stud.

To Replace Sockets Affixed by Method B

(If, when you remove your existing socket, a hole is left in the top of your candlestick.)

Wood Anchor Bolt & Threaded Stud Adapters



If your candlestick is wood . . .

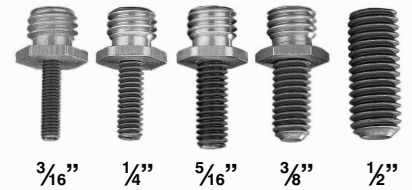
. . . the screw that held the socket in place is a wood screw. Determine the diameter and threads/inch of that screw.

If the wood screw that held the socket in place has a diameter of $\frac{1}{4}$ ", $\frac{5}{16}$ " or $\frac{3}{8}$ ", order one of Almy's three stock "Wood Anchor Bolt and Threaded Stud Adapters," — they are free when you order an Almy Liquid Candle or an Almy Candle Socket. These adapters convert the hole in your candlestick into the $\frac{1}{2}$ " diameter, 13 threads/inch stud size needed to fit Almy Sockets or Almy Liquid Candles.

Screw the Wood Anchor Bolt part of the adapter set into the hole in the top of your candlestick. When the wood anchor bolt has been installed, remove the two nuts and screw the Threaded Adapter Stud onto the machine screw section of the bolt. Use a $\frac{3}{8}$ " wrench to tighten adapter onto the bolt.

Install your Almy Liquid Candle or Almy Socket. Simply screw your candle or candle socket onto the Threaded Stud.

Set Screw & Threaded Stud Adapters



If your candlestick is metal . . .

. . . the screw that held the socket in place is a machine screw. Determine the diameter and threads/inch of that screw. Your local hardware store can help.

If the machine screw that held the socket in place has a diameter of $\frac{3}{16}$ ", $\frac{1}{4}$ ", $\frac{5}{16}$ ", $\frac{3}{8}$ ", or $\frac{1}{2}$ ", order one of Almy's four stock "Set Screw and Threaded Stud Adapters," — they are free when you order an Almy Liquid Candle or an Almy Candle Socket. These adapters convert the hole in your candlestick into the $\frac{1}{2}$ " diameter, 13 threads/inch stud size needed to fit Almy Sockets or Almy Liquid Candles.

Screw the Set Screw part of the adapter set into the hole in the top of your candlestick, and tighten with an Allen wrench. If the set screw you ordered is $\frac{1}{2}$ " in diameter, you are ready to install your Almy Liquid Candle or Almy Candle Socket. If it is one of the other four sizes, screw the Threaded Adapter Stud (included) onto the set screw. Use a $\frac{3}{8}$ " wrench to tighten adapter onto the bolt.

Install your Almy Liquid Candle or Almy Socket. Simply screw your candle or candle socket onto the Threaded Stud.

Questions?

If you have questions, or if none of our stock adapters help, please call our Almy Customer Service at 1.800.225.2569. We will advise you, or help you send your candlesticks to our metalware shop for professional, customized refitting and refurbishing.



CM ALMY

800.225.2569 www.almy.com

10664-1